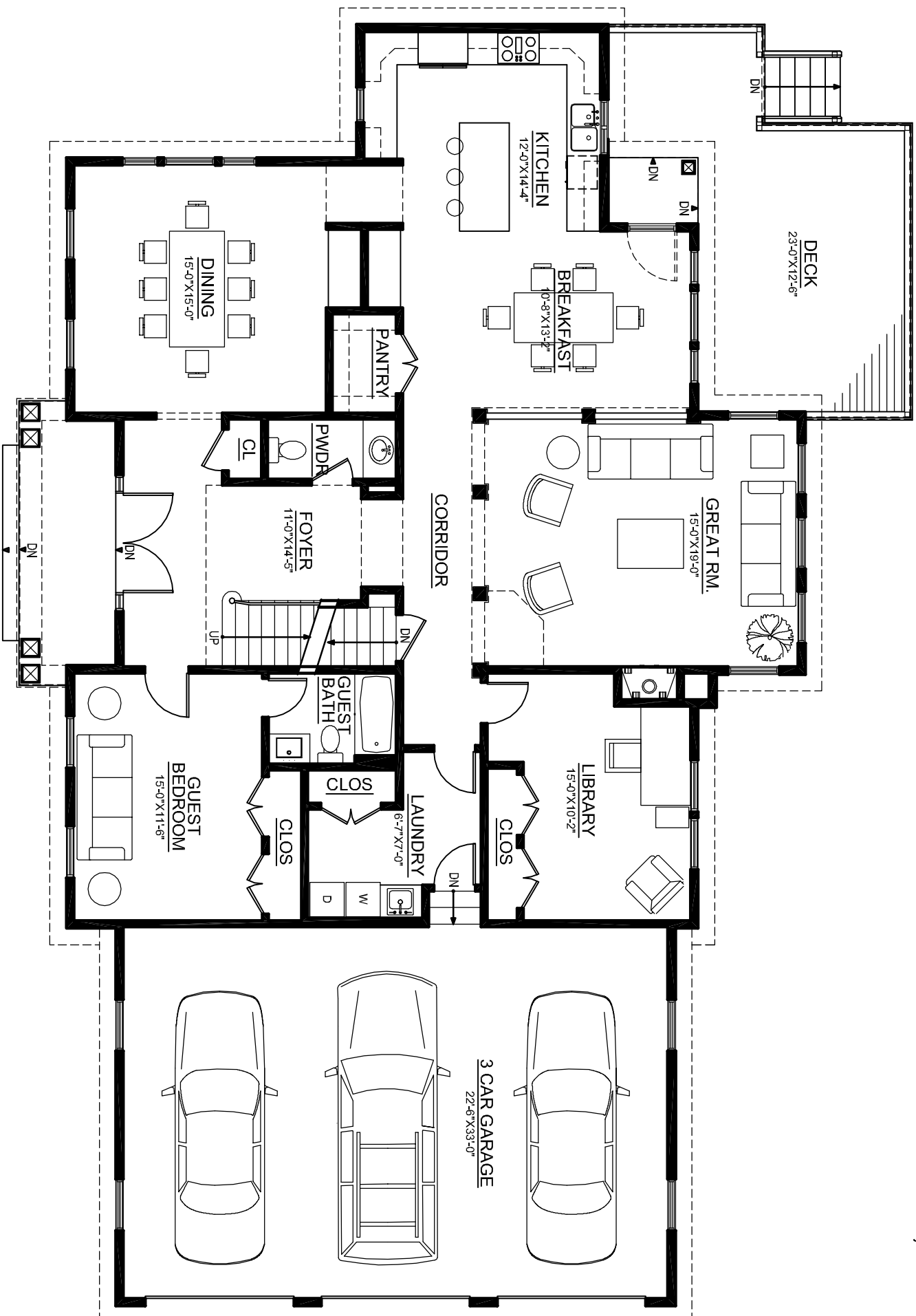


# The Bridge House - Southold

first floor plan

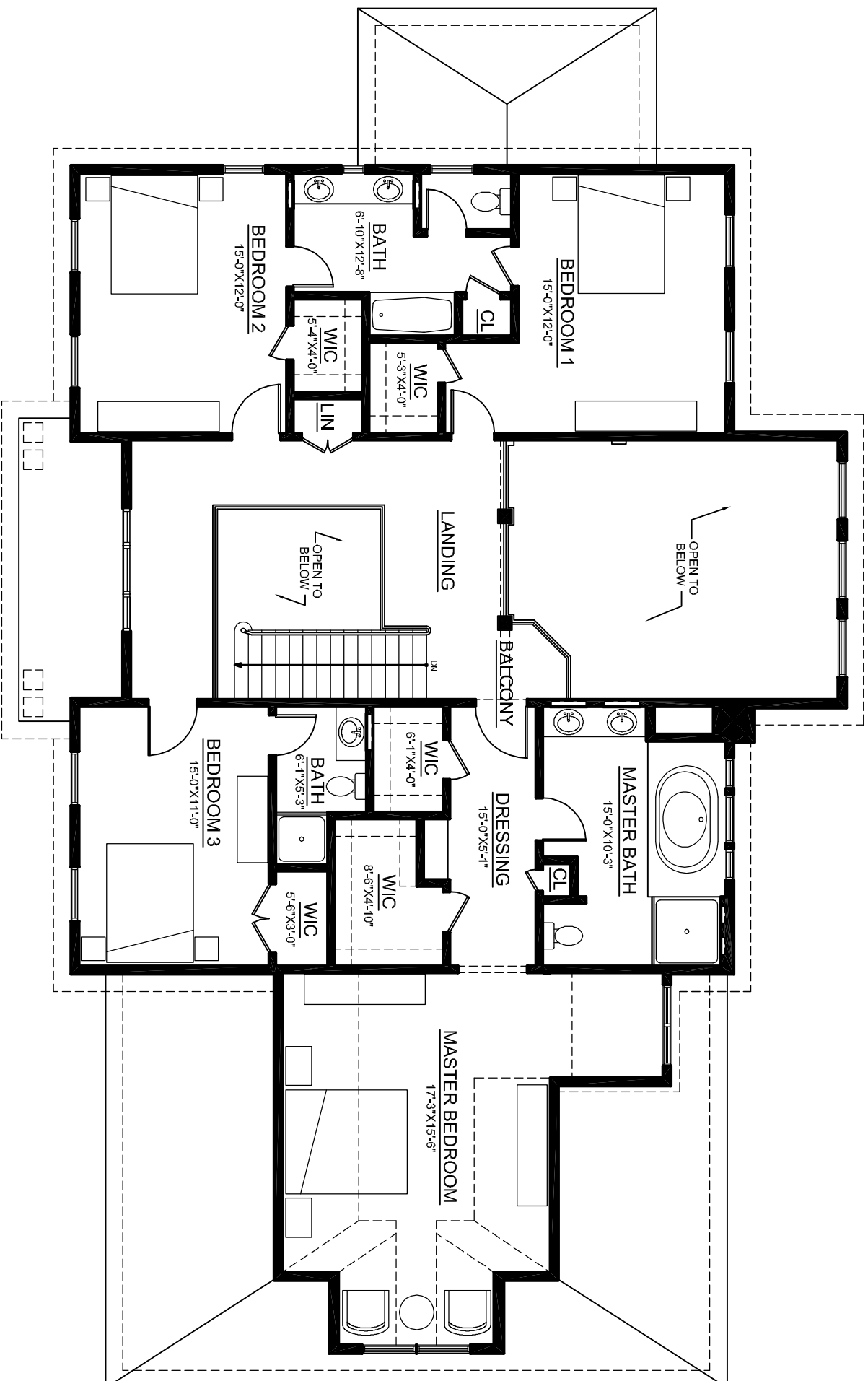
scale: 1/8"=1'-0"



1st floor 1,941 sf  
2nd floor 1,822 sf  
total 3,763 sf

# The Bridge House - Southold

Second floor plan  
scale: 1/8"=1'-0"



1st floor 1,941 sf  
2nd floor 1,822 sf  
total 3,763 sf